

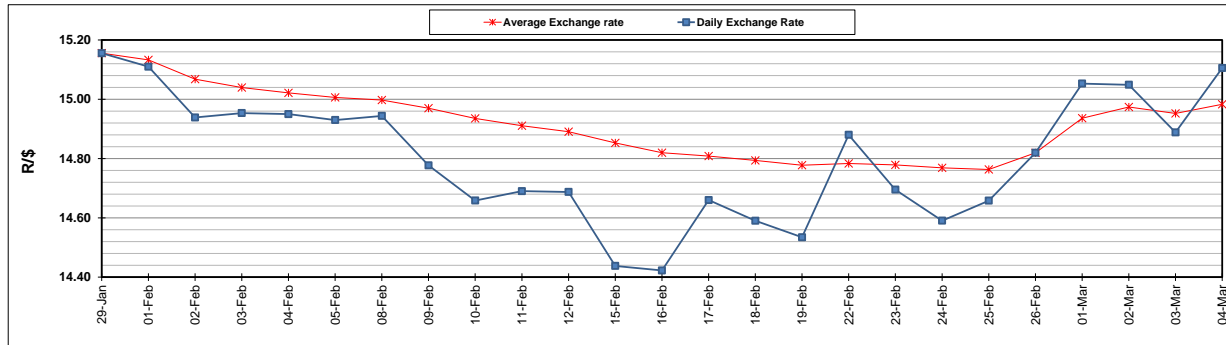
	PETROL 95 ULP	PETROL 93 ULP & LRP	DIESEL 0.05%	DIESEL 0.005%	ILL. PAR.
GAUTENG PUMP PRICE (SA c/l) AS FROM 03/03/2021	1,632.000	1,615.000	-	-	-
WHOLESALE PRICE (SA c/l) AS FROM 03/03/2021	-	-	1,412.420	1,416.820	845.688
SINGLE NATIONAL MAXIMUM RETAIL PRICE	-	-	-	-	1,071.000
BASIC FUEL PRICE - 04/03/2021 (SA c/l)	724.338	714.685	697.609	700.531	674.287
PRESS RELEASE CONTRIBUTION TO BFP 03/03/2021 - 04/03/2021 (SA c/l)	665.170	658.170	653.630	658.030	633.128
UNIT OVER/(UNDER) RECOVERY - 04/03/2021 (SA c/l)	(59.168)	(56.515)	(43.979)	(42.501)	(41.159)
AVERAGE BASIC FUEL PRICE 26/02/2021 - 04/03/2021	711.332	701.706	684.825	688.135	662.781
AVERAGE UNIT OVER/(UNDER) RECOVERY 26/02/2021 - 04/03/2021	(85.162)	(82.536)	(63.595)	(63.705)	(57.853)

ANALYSIS MOVEMENT OF AVERAGE OVER/(UNDER) RECOVERY

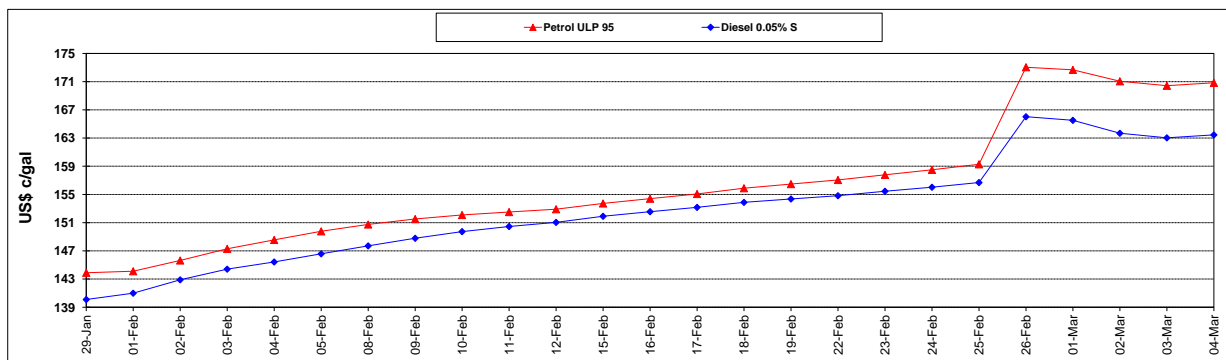
	PETROL 95	PETROL 93	DIESEL 0.05%	DIESEL 0.005%	ILL. PAR.
- MOVEMENT IN INTERNATIONAL PRODUCT PRICES	(74.727)	(72.242)	(53.549)	(53.610)	(48.130)
- MOVEMENT IN EXCHANGE RATE	(10.435)	(10.294)	(10.046)	(10.095)	(9.723)
AVERAGE UNIT OVER/(UNDER) RECOVERY 26/02/2021 - 04/03/2021	(85.162)	(82.536)	(63.595)	(63.705)	(57.853)

R/\$ EXCHANGE RATE - (R/\$15.1053 - 04/03/2021)

EXCHANGE RATE USED IN BASIC FUEL PRICE



INTERNATIONAL PRODUCT PRICES OF BASKET USED IN BASIC FUEL PRICE



BASIC FUEL PRICE IN SA CENTS PER LITRE

